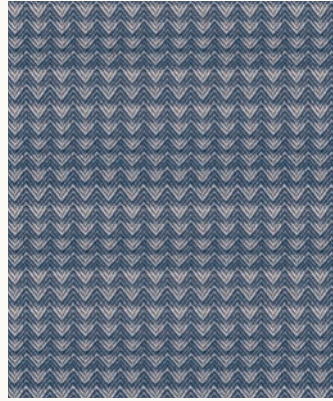




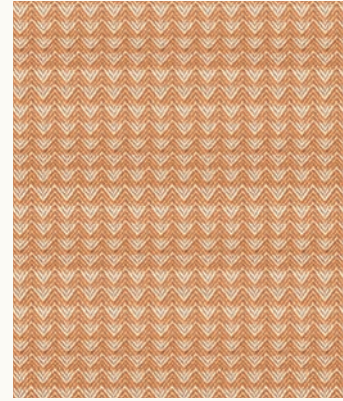
Warp & Weft is an entirely woven group designed by Alexia Marcelle Abegg to effortlessly mix and match with her previous group Alma and her basic Add It Up. The beautifully soft and drapery hand of these fabrics will make gorgeous garments and quilts, and the heavier Chore Coat fabric (RS4008) is perfect for bags and bottomweight garments. Cross Weave (RS4015) is a lightly textured solid that works great with Alexia's carved wooden stamp set (pg 58).

MOUNTAIN | NAVY



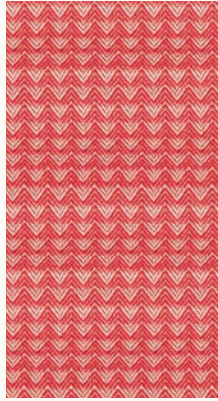
RS4007-11

MOUNTAIN | EARTH



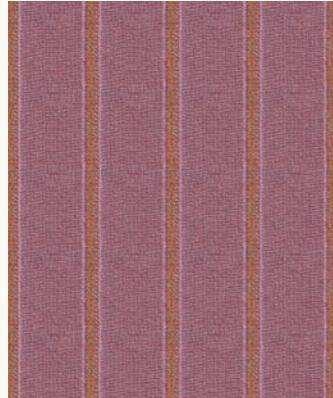
RS4007-12

MOUNTAIN | WARM RED



RS4007-13

STITCH | LILAC



RS4009-11

STITCH | SADDLE



RS4009-12

STITCH | CAYENNE



RS4009-13

## APRIL DELIVERY

28 Wovens (100% cotton)

RS4007



JJR does not include RS4008, RS4011, RS4015-11, 17, 18.

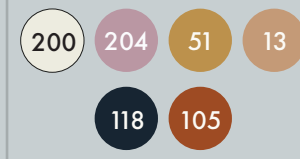
## SUGGESTED SPECKLED COORDINATES & COMPLEMENTS

RS5027



## SUGGESTED MODA BELLA SOLID COORDINATES & COMPLEMENTS

9900



FLICKER | LILAC



RS4012-11

FLICKER | NAVY



RS4012-12

FLICKER | PINK



RS4012-13

CROSS WEAVE | LAVENDER



RS4015-12

CROSS WEAVE | PERSIMMON



RS4015-13

CROSS WEAVE | CACTUS



RS4015-14



CHORE COAT | NAVY



RS4008-11

CHORE COAT | EARTH



RS4008-12

CHORE COAT | PERSIMMON



RS4008-13

CHORE COAT | NATURAL



RS4008-14



PARADE | NAVY



RS4010-11

PARADE | PERSIMMON



RS4010-12

PARADE | LAVENDER



RS4010-13

JUBILEE | SPRINKLES



RS4011-11



FLICKER | PERSIMMON



RS4012-14

MATINEE | EARTH



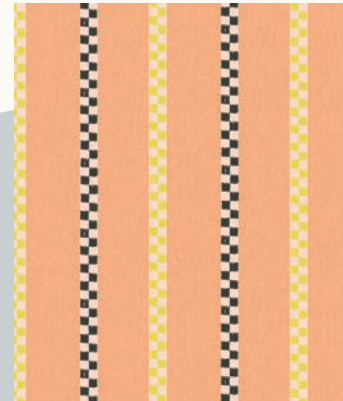
RS4013-11

MATINEE | DAHLIA



RS4013-12

CROSS WEAVE | WINE TIME



RS4015-11



CROSS WEAVE | NAVY



RS4015-15

CROSS WEAVE | DAHLIA



RS4015-16

CROSS WEAVE | SKY



RS4015-17

CROSS WEAVE | NATURAL



RS4015-18







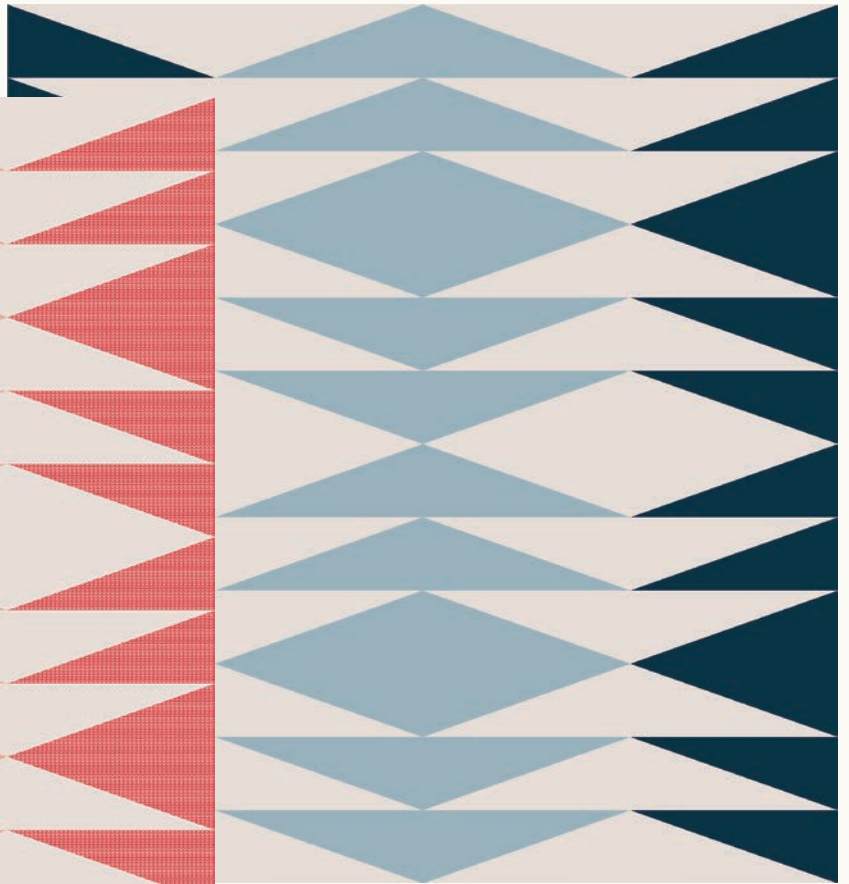
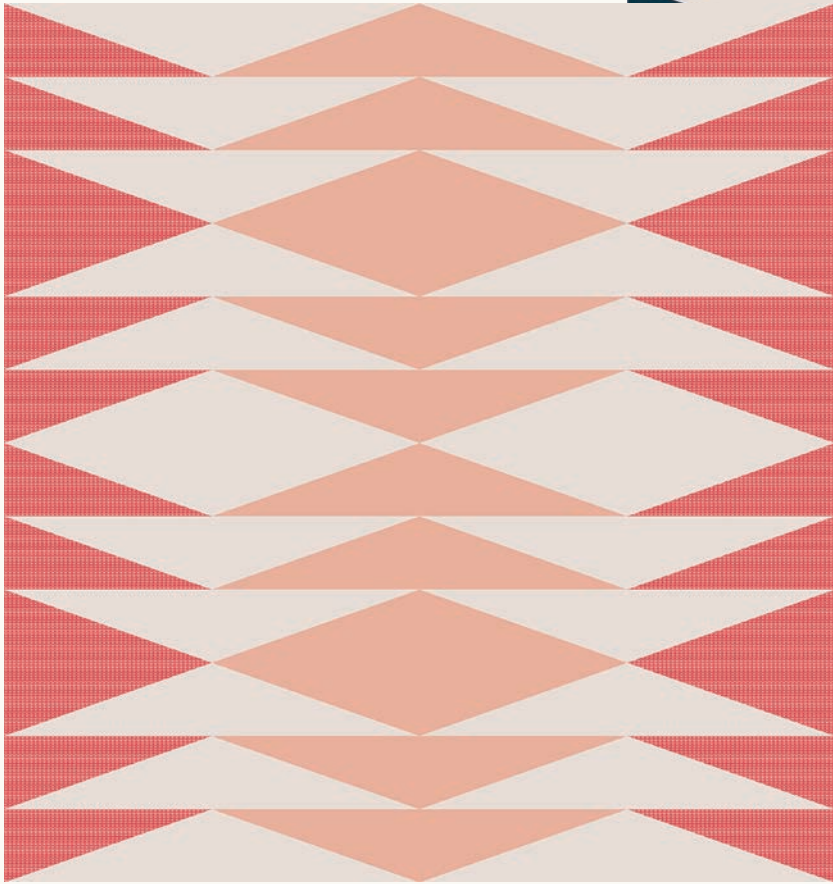
LST 125 Sallie Tomato - Connie



EQ0 - 0529 Eye Candy Quilts - Weftovers

80" x 80"





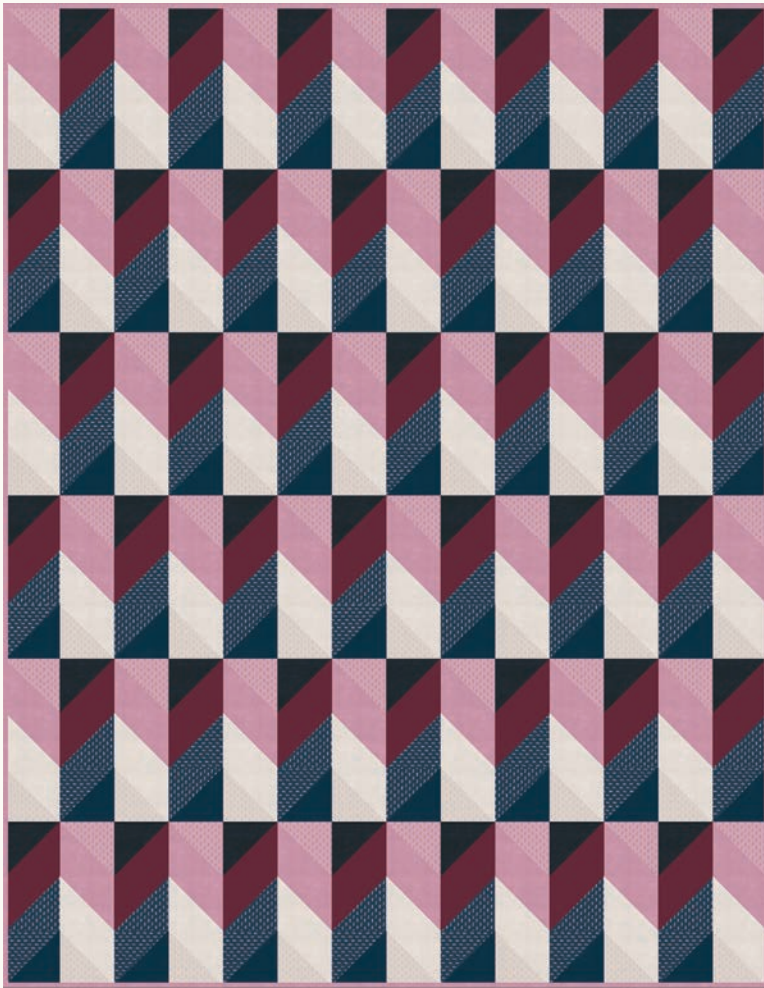
68" x 72"

IKS 222 Initial K Studio - Loma

PS RS4007 Ruby Star Society  
Table Runner & Napkins project sheet







SS 16051 Satterwhite Quilts - Troubadour

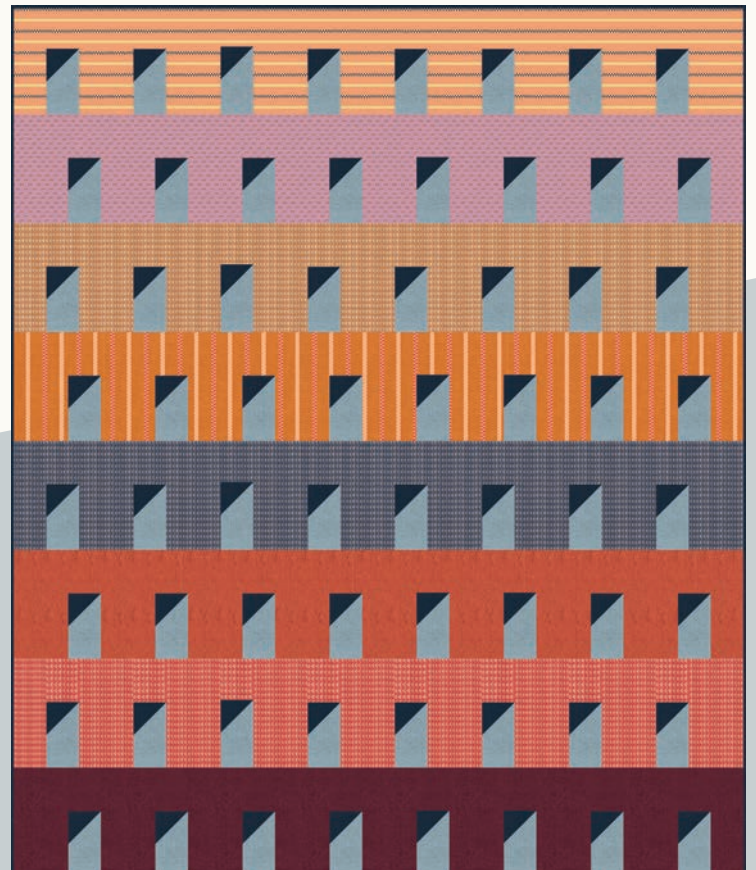
63" x 81"



ZW 2392 Zakka Workshop - Nani Iro Sewing Studio (book)



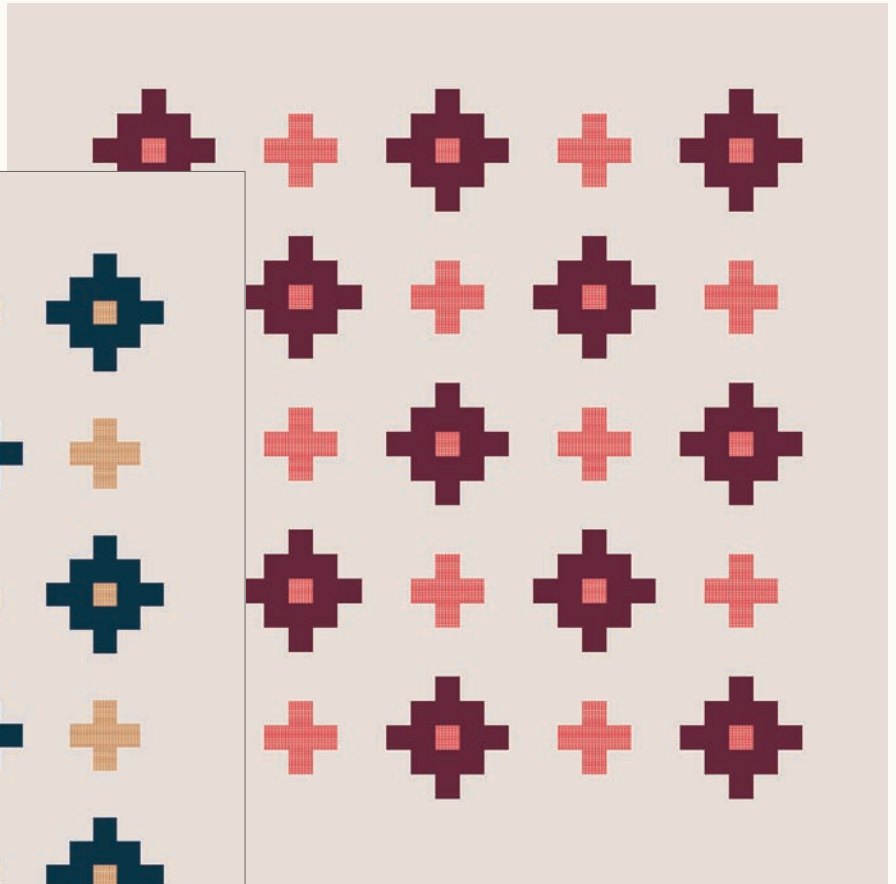
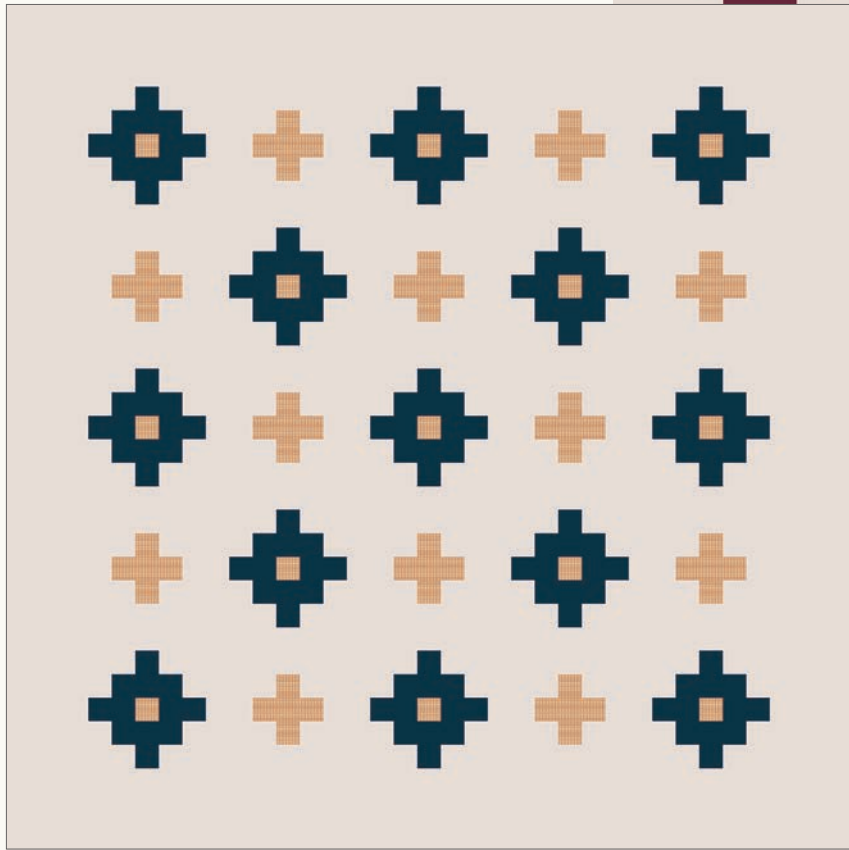
SL N129 Sew Liberated - Arenite Pants (adult)



ES-417-PL0 Everyday Stitches - Pueblo

67" x 80"





60" x 60"

IKS 223 Initial K Studio - Meander



FPC 022 Friday Pattern Company - Wilder Gown (adult)